

LMZC(4-5)-10

电流互感器 CURRENT TRANSFORMER

OBC®

环网柜、充气柜用互感器

6-35kV 户内电流互感器

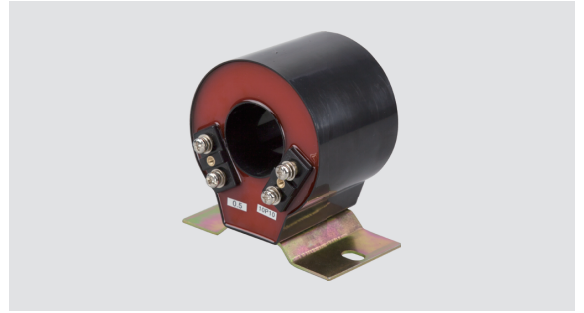
户内 单相 环氧树脂浇注式

INDOOR SINGLE-PHASE EPOXY RESIN CASTING TYPE

技术参数 Technical data

○ 额定二次电流 5A 或 1A

额定电流比、准确级及其额定负载如下表所示。



型号 Type	用途 Purpose	测量电流互感器 Measuring current transformers			保护电流互感器 Protective Current transformer			双绕组电流互感器 Double winding Current transformer					
		额定一次电流 (A) Rated primary current	准确级及额定输出 (VA) COSφ = 0.8 Accuracy class and rated output										
			0.2s	0.2	0.5	10P15	10P10	10P5	0.2s	0.5	10P10	10P5	
LMZC4-10C LMZC4-10P LMZC4-10CP	40			2.5									
	50		2.5	5				2.5					
	75	5	5	5				3.75					
	100	5	5	5	2.5	3.75	7.5						
	150	5	5	5	2.5	5	10						
	200				3.75	7.5	15	5	5			2.5	
	300				5	10	20	5	5			3.75	
	400				10	15	25	7.5	7.5	2.5	5		
	500				10	15	30	10	10	2.5	5		
LMZC5-10C LMZC5-10P LMZC5-10CP	600				10	15	30	10	10	3.75	7.5		
	30			2.5									
	40			2.5				2.5					
	50	2.5						3.75					
	75							5					
	100				3.75	3.75	10						
	150				3.75	7.5	15						
	200				5	10	20	5	5			2.5	
	300							7.5	7.5			3.75	
400							7.5	7.5	2.5	5			
500							10	10	2.5	5			
600							10	10	3.75	7.5			

外形及安装尺寸 Overall dimension drawing

