

空气绝缘开关柜用互感器

3-40.5kV 户内电压互感器

户内 单相 环氧树脂浇注式

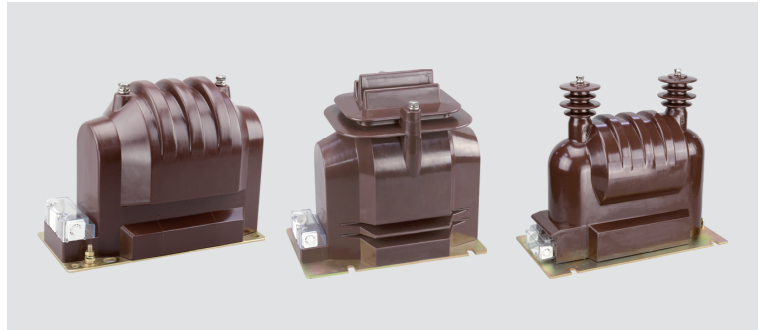
INDOOR SINGLE-PHASE EPOXY RESIN CASTING TYPE

技术参数 Technical data

○ 产品性能符合标准：GB/T20840.1、3 和 IEC61869-1、3
The voltage transformers are in accordance with GB/T20840.1、3 and IEC61869-1、3 standards

○ 额定频率：50Hz 或 60Hz
Rated frequency 50Hz or 60Hz

○ 环境温度：-5℃ ~+40℃
Ambient temperature -5℃ ~+40℃



型号 Type	额定电压比 (V) Rated voltage ratio	准确级或准确级组合 额定二次输出 (VA) Accuracy class and accuracy class combination rated secondary output	热极限输出 (VA) Limited output	额定绝缘水平 (kV) Rated insulation level	表面爬电距离 (mm) Surface creepage distance	一次熔断器 (A) Once fuse	重量 (kg) weight	接线图 Wiring diagram
DC-3/1	3/0.22	3-600	1000	3.6/23/40	250	0.5	34	图 1 Figure 1
DC-6/1	6/0.22			7.2/32/60		0.2		
DC-10/1	10/0.22			12/42/75		0.5		
DC-3/1	3/0.1/0.22	0.2/3- 30/500 0.5/3-80/500	400/800	3.6/23/40	250	0.5	50	图 2 Figure 2
DC-6/1	6/0.1/0.22			7.2/32/60		0.2		
DC-10/1	10/0.1/0.22			12/42/75		0.2		
DC-3/2	3/0.22	3-1500	2000	3.6/23/40	490	1	50	图 1 Figure 1
DC-6/2	6/0.22			7.2/32/60		0.5		
DC-10/2	10/0.22			12/42/75		0.2		
DC-3/2	3/0.1/0.22	0.2/3---50/1500 0.5/3---150/1500	400/2000	3.6/23/40	490	1	50	图 2 Figure 2
DC-6/2	6/0.1/0.22			7.2/32/60		0.5		
DC-10/2	10/0.1/0.22			12/42/75		0.2		
DC-3/3	3/0.22	3---2000	3000	3.6/23/40	370	2	71	图 1 Figure 1
DC-6/3	6/0.22			7.2/32/60		1		
DC-10/3	10/0.22			12/42/75		0.5		
DC-3/3	3/0.1/0.22	0.2/3---50/1500 0.5/3---150/1500	400/3000	3.6/23/40	370	2	71	图 2 Figure 2
DC-6/3	6/0.1/0.22			7.2/32/60		1		
DC-10/3	10/0.1/0.22			12/42/75		0.25		

外形及安装尺寸 Overall dimension drawing

DC-3、6、10/1

