

### 空气绝缘开关柜用互感器

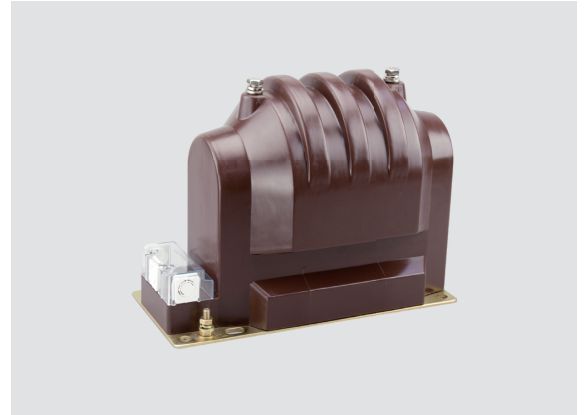
3-40.5kV 户内电压互感器

户内 单相 环氧树脂浇注式

INDOOR SINGLE-PHASE EPOXY RESIN CASTING TYPE

#### 技术参数 Technical data

- 产品性能符合标准：GB/T20840.1、3 和 IEC61869-1、3  
The voltage transformers are in accordance with GB/T20840.1、3 and IEC61869-1、3 standards
- 额定频率：50Hz 或 60Hz  
Rated frequency 50Hz or 60Hz
- 环境温度：-5℃ ~+40℃  
Ambient temperature -5℃ ~+40℃



型号 Type	额定电压比 (V) Rated voltage ratio	准确级或准确级组合 额定二次输出 (VA) Accuracy class and accuracy class combination arted secondary output	热极限输出 (VA) Limited output	额定绝缘水平 (kV) Rated insulation level	表面爬电距离 (mm) Surface creepage distance	重量 (kg) weight	备注 Notes	接线图 Wiring diagram	
JDZ9-3	3000/100	0.2-40 0.5-120 1-240 3-600	1000	3.6/23/40	250	34	同 “VKV” Same “VKV”	图 1-图 2 Figure 1-2	
JDZ9-6	6000/100			7.2/32/60					
JDZ9-10	10000/100			0.2/0.2-20/20 0.2/0.5-20/30 0.5/0.5-50/50				500/500	12/42/75
	10000/100/100	0.2/3-40/600 0.5/3-120/600	800/1000						
JDZ9-10	10000/100/200			0.2/6P(3P)-30/100 0.5/6P(3P)-60/100 1/6P(3P)-180/100 3/6P(3P)-500/100				600	3.6/23/40
JDZX9-3G	$\frac{3000}{\sqrt{3}} / \frac{100}{\sqrt{3}} / \frac{100}{3}$	7.2/32/60							
JDZX9-6G	$\frac{6000}{\sqrt{3}} / \frac{100}{\sqrt{3}} / \frac{100}{3}$								
JDZX9-10G	$\frac{10000}{\sqrt{3}} / \frac{100}{\sqrt{3}} / \frac{100}{3}$	0.2/0.2/6P(3P)-15/15/100 0.2/0.5/6P(3P)-15/20/100 0.5/0.5/6P(3P)-40/40/100	300/300	12/42/75	图 6 Figure 6				
	$\frac{10000}{\sqrt{3}} / \frac{100}{\sqrt{3}} / \frac{100}{\sqrt{3}} / \frac{100}{3}$								

#### 外形及安装尺寸 Overall dimension drawing

